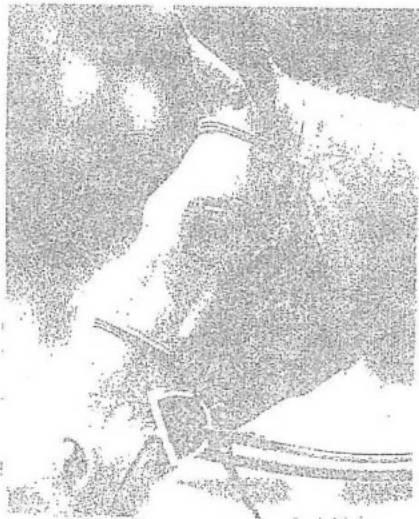


# Timber Edge Farm Horse Shows

Sunday, May 20, 2011

1041 W. County Line Road  
Horsham, Pennsylvania 19044  
(1 1/2 miles West of Route 611)



## Officials

Judge: 5/20 Jennifer Shiners

Announcer: Maggie Tiller

Information  
and Entries: Judy Stephens

Phone: (215) 343-1206  
Cell: (215) 262-8905  
Fax: (215) 343-7007

## General Information

1. Entry fee: \$20.00 per class for entries received two days before the show. Post entries \$22.00 per class.
2. Neither the horse show committee nor Timber Edge Farm, Inc. will be responsible for any damage, injury or loss to persons, horse/pony or property of exhibitor or spectator incurred on or off the horse show grounds.
3. The management reserves the right to divide, combine, cancel or change the order of classes when necessary.
4. Anyone or any horse suspended from the USEF will not be permitted to show at an Associated Horse Show.
5. Classes for Juniors will be limited to riders who have not reached their 18th birthday prior to December 1, 2011.
6. Trophy and six ribbons awarded in each class, with 8 Championship Divisions. No trophies awarded if less than 4 entries.
7. Hard hats must be worn in every class and while schooling. Harness required for juniors.
8. The decision of the Judge and/or Steward will be final.
9. No martingales permitted in under saddle classes.
10. Schooling permitted until 7:45 A.M.
11. All fence heights are approximate.
12. The show is generally held despite inclement weather, but will be cancelled in case of extremely heavy rain. Call if in doubt.
13. For your own safety, schooling may be regulated by the show management, dependent upon entries.
14. Three in a division MUST run as a division. A division with two entries may run for lesser points or be combined with appropriate division at show managers discretion. Decision to be made before division begins.
15. A \$5.00 fee per exhibition will be charged to cover the expense of having a medic on the grounds.

## Time Schedule

### 8:00 am

1. High Schooling Hunter Over Fences
2. High Schooling Hunter Over Fences
3. High Schooling Hunter Over Fences
4. High Schooling Hunter Under Saddle
5. Low Schooling Hunter Over Fences
6. Low Schooling Hunter Over Fences
7. Low Schooling Hunter Over Fences
8. Low Schooling Hunter Under Saddle
9. Modified Hunter Over Fences
10. Modified Hunter Over Fences
11. Modified Hunter Over Fences
12. Modified Hunter Under Saddle

### 9:30 am

#### 13a. Leadline (11:00)

#### 13b. Leadline

### Tentative Schooling Break

14. Short Stirrup Equitation Over Fences
15. Short Stirrup Equitation Over Fences
16. Short Stirrup Equitation Walk, Trot
17. Short Stirrup Equitation Walk, Trot, Canter
18. Lesson Mount Walk, Trot, Equitation
19. Lesson Mount Walk, Trot, Pleasure
20. Lesson Mount Walk, Trot, Canter Individually
21. Lesson Mount Over 4 Ground Poles

### Tentative Schooling Break

22. Mini Stirrup Walk, Trot, Equitation
23. Mini Stirrup Walk, Trot, Pleasure
24. Mini Stirrup Walk, Trot, Figure Eight
25. Mini Stirrup Over 4 Ground Poles

### Tentative Schooling Break

26. Beginner Equitation Over Fences
27. Beginner Equitation Over Fences
28. Beginner Equitation Walk, Trot
29. Beginner Equitation Walk, Trot, Canter

### Tentative Schooling Break

30. Pre-children, Pre-Adult Hunter Over Fences
31. Pre-children, Pre-Adult Hunter Over Fences
32. Pre-children, Pre-Adult Hunter Over Fences
33. Pre-children, Pre-Adult Hunter Under Saddle

35. Low Schooling Jumpers Table II 2(b)
36. Low Schooling Jumpers Table II 2(b)
37. Low Schooling Jumpers Table II 2(c)
38. High Schooling Jumpers Table II 2(b)
39. High Schooling Jumpers Table II 2(b)
40. High Schooling Jumpers Table II 2(c)

## Class Descriptions

**Pre-Children, Pre-Adult's Hunter** AHS points  
Open to junior riders still eligible for Novice Equitation. Horse to jump 2'6", ponies 2". Open to adult amateurs on horses or ponies. May be divided if entries warrant.

**Short Stirrup  
Equitation Division** AHS points  
Open to children ten (10) years and under who have not competed in any show over fences exceeding 2'. Open to horses and ponies.

**Beginner Equitation Division** AHS Points  
Open to junior riders who have not shown in more than 8 horse shows in any one year, prior to December 1, 2004. Division will be split if entries warrant. May only cross-enter into Junior Modified Hunter.

**Modified Hunter Division** AHS Points  
Open to all riders, on horses or ponies, who have never shown at 2'6" or higher in any recognized show. Fences 2', May only cross enter into Beginner, Long Stirrup, and Junior Pleasure. Eligibility limited to one year. May be divided if entries warrant.

**Mini Stirrup Division** AHS Points  
Open to riders 8 years and under. Not eligible for any jumping classes.

**Lesson Mount Division** AHS Points  
Open to riders on horses or ponies used solely in lesson programs. Judged on hands, seat, general appearance and control.

**High Schooling Hunter Division** AHS Points  
Open to all riders on horses or ponies. Fences 2'6" or 3'.

**Low Schooling Hunter Division** AHS Points  
Open to all riders on horses or ponies. Fences 2' and 2'3".

**Low Schooling Jumpers** AHS Points  
Open to all riders on horses and ponies. Courses must be run as Table IIa, Table IIb, Table IIc, or Table V (Optimum Time). Jumps to be at 1'9" and/or 2'. Time allowed will be generous (350m/min). (See USEF Rulebook for Table descriptions).

**High Schooling Jumpers** AHS Points  
Open to all riders on horses and ponies. Courses must be run as Table IIa, Table IIb, Table IIc, or Table V (Optimum Time). Jumps to be at 2'9". Time allowed will be generous (350m/min). (See USEF Rulebook for Table descriptions).

**Miscellaneous** No Points  
13a. Leadline  
Open to children 6 years or age or under. To be judged on manners and suitability at a walk. Not eligible for any other classes except 13b.

13b. Leadline AHS Points  
May be asked to trot. Only eligible for 13a.

34. Adult Pleasure AHS Points  
Open to horses and ponies